

Village at Alpine Valley

Check-In and Check-Out Location & Contact Information

La Plata House

4645 Stanton Rd
Colorado Springs, CO 80918
719-255-6288 | confasst@uccs.edu

Hours of Operation: 8:00am - 9:00pm

Check-Out Time: Anytime before 12:00pm | Check-In Time: Anytime after 2:00pm

Early or Late Check-In/Check-Out & After Hours

Call our After Hours Number: 719-255-4600 and a Conference Assistant will meet you in front of La Plata House

Check-In & Check-Out Parking

Please park your vehicle in Alpine Garage & Field (AGF) and proceed to La Plata House (LAPL) by exiting through the South side of the AGF and following directional signage

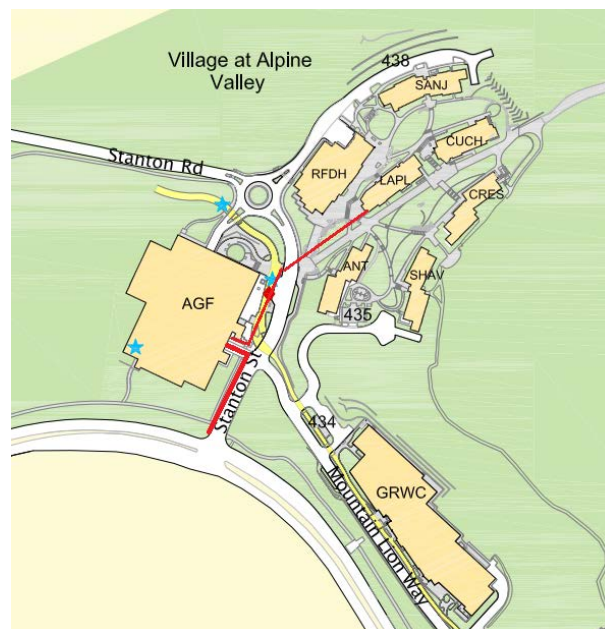
See page 2 for detailed directions

Upon Checking In, You Will Receive:

- Keys to your room and Swipe Card
 - Swipe card will give you access to buildings, meals, and recreation center.
- Parking Permit (Required June 12 - August 4)
 - This will allow you to park anywhere on campus, except for visitor parking, loading and fire zones, and/or handicap parking.

In order to receive parking permit please provide Licence Plate Number and Cell Phone Number

- At Check-In you can request:
 - Wi-Fi Instructions
 - Welcome Brochure with Campus Map & Information



Driving and Parking Directions

La Plata House Check-In Directions

Directions from I-25 Southbound

- Take I-25 Southbound to the exit marked "Corporate Center Drive/North Nevada/Rockrimmon," exit 148 (first exit after Woodman Road).
- After exiting, take the first left (marked 148A) to access North Nevada Avenue.
- Continue on North Nevada and turn left (east) at the Austin Bluffs Parkway/Garden of the Gods intersection.
- Turn left into UCCS at the first stoplight (Stanton Rd).
- Turn left into the Alpine Field Parking Garage and proceed to levels 2 and 3. **There is no ticketing for these level.**

- OR -

Directions from I-25 Northbound

- Take I-25 Northbound to the "Garden of the Gods Exit," exit 146.
- Keep right to merge right (east) onto Garden of the Gods Road. Garden of the Gods Road will become Austin Bluffs Parkway at North Nevada Avenue.
- Turn left into UCCS at the first stop light (Stanton Rd).
- Turn into the Alpine Field Parking Garage and proceed to levels 2 and 3. **There is no ticketing for these levels**

Instructions for Parking/Meeting Location:

Directions to La Plata House from Parking Garage:

- Proceed to the Parking Garage exits (on south end)
- Follow the sidewalk (Represented by red dashed line on map) towards Village at Alpine Valley (Dotted Line).
- Cross the road at the second crosswalk and head towards La Plata House, follow the ramp up toward the exterior door on the Northeast corner of the building

If you should need help, please contact La Plata House Front Desk at 719-255-6288.





**GET TOGETHER.
COME TOGETHER.
STAY TOGETHER.**

Take your event to new heights at UCCS

SUMMER CONFERENCES
- WELCOME PACKET -
Summer 2017



TABLE OF CONTENTS

UNIVERSITY OF COLORADO COLORADO SPRINGS

UCCSBackground.....3

Directions to Campus.....4

Campus Map & Colorado Springs Map.....5

ParkingGuidelines.....6

Charter Services.....7

WELCOME TO COLORADO SPRINGS

Brief Overview & General Information.....8

ACCOMMODATIONS - HOUSING VILLAGE

Brief Overview & General Information.....9

Standards of Service..... 10

FACILITIES - AMENITIES

Brief Overview & General Information.....11

Bookstore.....11

CopyCenter.....11

Computing Services.....11

Shipping/Receiving.....11

FOOD SERVICE

Brief Overview & General Information.....12

Hours of Operation.....12



UNIVERSITY OF COLORADO COLORADO

In 1965, the University of Colorado at Colorado Springs moved to a craggy hill with a panoramic view of Pikes Peak. Known as the “Cragmor Parcel,” this became the UCCS home for a growing following of scholars. Now, 50 years later, the university offers a broad range of degree programs in the liberal arts and sciences in addition to professional programs in business, engineering, nursing, education and public affairs to meet the needs of Colorado’s second-largest metropolitan area and beyond.

The combination of the state’s desire to attract Hewlett-Packard to Colorado Springs and George T. Dwire’s sale of the defunct 80-acre Cragmor Sanatorium property for \$1 led to birth of UCCS. Because of its ties to HP, initial university programs focused on engineering and business. Today, those programs serve as pillars of the university and are joined by programs offered in the College of Letters, Arts and Sciences, the College of Education, the Graduate School of Public Affairs and the Beth-El College of Nursing and Health Sciences. A 1997 community referendum merged Beth-El College of Nursing with UCCS and, in recent years, programs such as the Network Information and Space Security Center were added to connect the university with the military to improve national security. Other programs, including the CU Institute for Bioenergetics and the Institute for Science and Space Studies, cast an eye toward the future.

UCCS now offers 36 bachelors, 19 masters and 5 doctoral degrees and aims to become the premier comprehensive regional research university in the nation with 10,000-12,000 students. In recent years, U.S. News and World Report named UCCS a top Western public university, placing it sixth in its most recent edition. In addition to its academic programs, UCCS fields 14 men’s and women’s NCAA Division II sports teams and has a full range of student life programming.



Cragmor Manor Nursing Home, now Cragmor Hall



Cragmor Sanatorium circa 1930s. Main Hall reflects its legacy.



UCCS Campus looking west from Main Hall, 1990.

UCCS Vision and Mission Statements

OUR VISION “UCCS, a premier comprehensive undergraduate and specialized graduate research university, provides students with academically rigorous and life-enriching experiences, in a vibrant university community. We advance knowledge, broaden access, and integrate student learning with the spirit of discovery for the benefit of southern Colorado, the state, nation and world.”

OUR MISSION “The Colorado Springs campus of the University of Colorado shall be a comprehensive baccalaureate university with selective admission standards. The Colorado Springs campus shall offer liberal arts and sciences, business, engineering, health sciences, and teacher preparation undergraduate degree programs, and a selected number of masters and doctoral degree programs.”



DRIVING DIRECTIONS

From Denver and the North

Take I-25 South into Colorado Springs. Take the Nevada Blvd. Exit #148A, which exits left off the interstate. Follow Nevada to the first stoplight, Austin Bluffs Parkway, turn left. Take a left off of Austin Bluffs Parkway at the second light, labeled UCCS. You should now be on Campus. Housing and University Center directions are at the bottom of this page.

From Pueblo and the South:

Take I-25 North into Colorado Springs. Take the Garden of the Gods Road exit. Turn right or East onto Garden of the Gods. Garden of the Gods will turn into Austin Bluffs Parkway at Nevada Blvd. Continue on Austin Bluffs Parkway. Take a left off of Austin Bluffs Parkway at the light, labeled UCCS. You should now be on Campus. Housing and University Center directions are at the bottom of this page.

From Woodland Park and the West:

Take Highway 24 into Colorado Springs. When Highway 24 comes to I-25, take I-25 north and follow the above directions in from the South.

From Limon and the East:

Take Highway 24 into Colorado Springs. As you come into the Springs you will want to take Highway 83 North that is also Academy Blvd. Follow Academy for several miles as it winds through the city. Academy is one of the main business strips in the city. On Academy you will cross over the following streets: Galley, Palmer Park Blvd., Constitution, and Maizeland. After Maizeland, you will cross over several smaller streets, but the next major intersection will be Austin Bluffs Parkway with an extremely long left turn lane. Turn left onto Austin Bluffs next to Kentucky Fried Chicken and Old Chicago restaurant. Follow Austin Bluffs Parkway several miles. After you cross Union Blvd., the road climbs along a hill past Compassion International. Turn right into the University at the second stop light, which is UCCS. Housing and University Center directions are at the bottom of this page.

Directions from Colorado Springs Airport:

Once you get out of the airport, the first major road is Powers (the first stop light.) You should see a sign leading you towards I-25. You will go straight and follow signs to I-25. You want to go north (Denver) on I-25. Then follow the driving directions coming from Pueblo and the South.

Entering Campus:

For Handicap Access/Parking, please call 719.255.4042

Summit Village

- Monarch House

1420 Austin Bluffs Pkwy

Colorado Springs, CO

719-255-4042 | confasst@uccs.edu

Village at Alpine Valley & Alpine Village Apartments

- La Plata House

4645 Stanton Rd

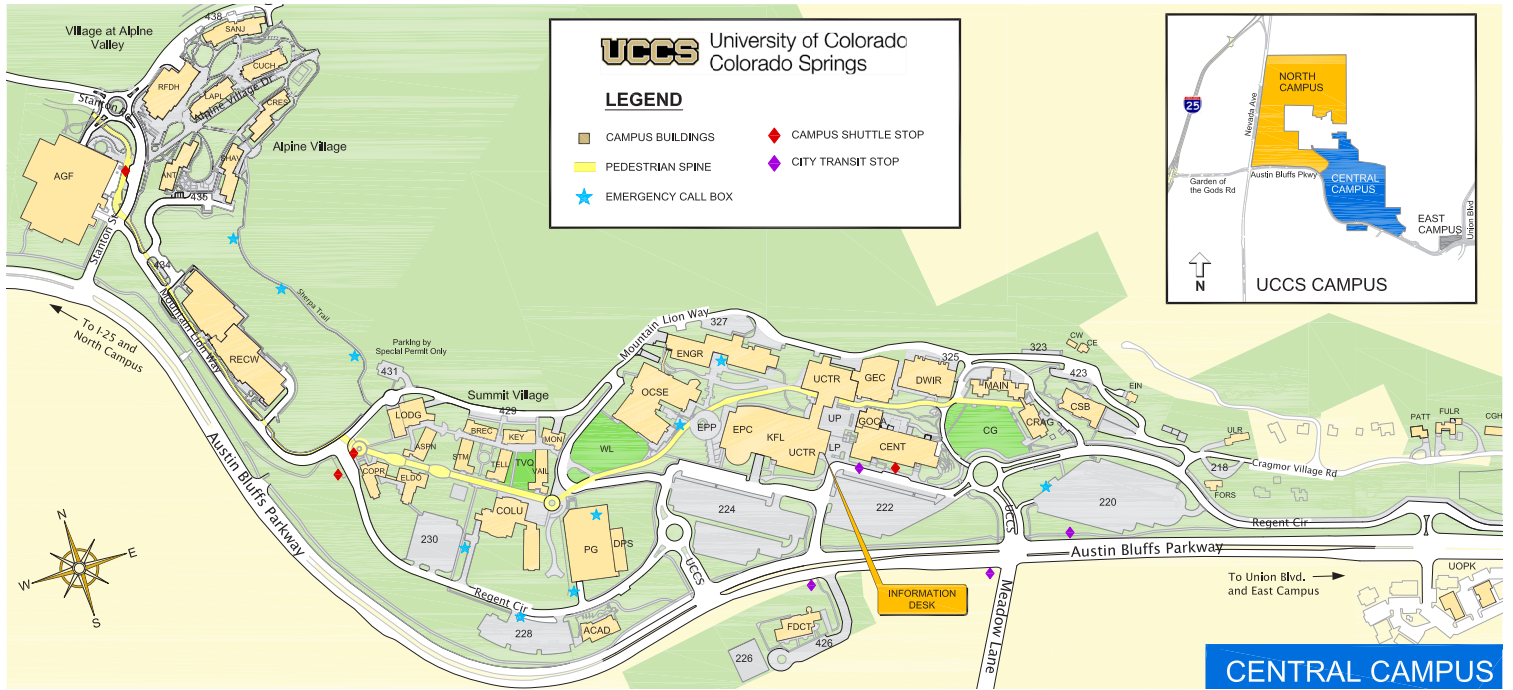
Colorado Springs, CO

719-255-6288 | confasst@uccs.edu

*Additional directions available in Housing Check-In Form



CAMPUS MAP



COLORADO SPRINGS MAP



Scan for an Interactive Campus Map:





PARKING GUIDELINES

The Summer Conferencing Office would like to stress the importance of knowing and understanding all of the rules and regulations for parking on campus and disseminating this information to all conference attendees. All individuals who come to UCCS during the regular semesters must pay for parking; this includes all Staff and Faculty.

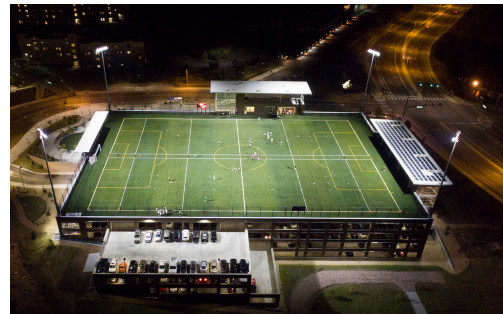
UCCS Summer Conferences has been able to negotiate a Do Not Ticket (DNT) in specific parking lots (Will receive information from Summer Conferences) for groups residing on campus to check-in for their conference or a camp. Check-in will be at Monarch Front Desk or La Plata Front Desk and you will receive your parking permit at that time. When guests have checked-in, guests must **MOVE THEIR VEHICLE** to an appropriate parking lot and display your permit so it is visible to parking enforcement personnel.

For non-resident conference or camp attendees, parking permits are \$5.00 per day and must be displayed Mon-Fri. They are valid in lots 220, 222, 224, 228, & Levels 1, 2, 4 & 5 of the Parking Garage (PG) & Level 1 of the Alpine Garage & Field (AGF - adjacent to Alpine Village, off Stanton Road). Do **NOT** park in metered or numbered spaces on Level 3. Parking permits are available for purchase through the Summer Conferences staff.

If a conference participant arrives on campus outside of the registration or check-in time period there are “15 minute” parking spaces located in each of the parking lots as well as behind Keystone House on Mountain Lion Way. These spaces are for check-in and loading/unloading **ONLY**. There is also a Visitor Lot on the 3rd Level of the Parking Garage. The cost is \$2.00 per hour and does not exceed \$10.00 per day. The Visitor Lot is pre-pay and accepts credit cards.

If a conference participant does receive a parking ticket, the Summer Conferencing Office will not waive the fee unless there are unusual circumstances.

No Ticketing, No Permit Required during May 15 – June 11, 2017.





CHARTER SERVICE

Below you will find general information about charter services. Specific details can be obtained when you have a complete itinerary.

1. Buses have a capacity of 32 passengers
2. No over or under storage capabilities. If you have a lot of baggage, you will have to reduce the amount of passengers, obtain a cargo vehicle separately from UCCS or charter an extra bus. Passengers are responsible for loading/unloading all luggage and cargo.
3. No alcohol may be consumed or transported on the buses
4. All passenger must have a seat, no sitting is permitted in the aisle. No passengers are allowed to stand while the bus is in motion without AUTHORIZATION.
5. No bathrooms on the buses
6. Max speed for buses is 65 MPH per policy
7. No smoking in university vehicles
8. Buses will only operate in Colorado, generally along the I-25 corridor.
9. Rates for buses are as follows:
 - a. \$45 per hour drive time – this rate is only available to UCCS student groups.
 - b. \$55 per hour drive time – drive time is established by using Google Maps with your itinerary. All drive times are rounded up to the next hour. Example Google maps says your trip into Denver is 1 hour 15 minutes, it will be billed at 2 hours drive time up and the 2 hours drive time back.
 - c. \$15 per hour wait time. – The remainder of your time from the calculation above will be billed at \$15 per hour wait time. Example you leave the campus for 10 hours to the same example above. 4 hours would be billed at drive time the remainder of the time is billed as wait time.
 - d. We bill by the calculations above, not by the mile
 - e. As long as your group in good faith stays to the itinerary you will be billed for the amount agreed to. If there are road conditions (weather, accidents blocking roadway, etc.) causing delays you will still be billed for the agreed amount. If however, you have the driver stay longer than the itinerary or add stops then you will be billed accordingly.
 - f. Complete the Charter request form (available from Conference Services) to get a preliminary Charter contract drafted. Upon confirmation of to the trip information, Conference Services will then sign the confirmed contract on your behalf and bill the charges on your Conferencing Invoice.
10. Availability is always a critical part of the process. A bus is not reserved until UCCS Transportation Services has a completed contract signed by both the group representative and the Transportation Manager from UCCS. When you inquire about dates, the information you will receive is always qualified with currently available. We have a limited amount of buses and the primary mission is to transport UCCS students, then charters as we can work them in.





WELCOME TO COLORADO SPRINGS

Geography

Colorado Springs is a large city located just east of the geographic center of the U.S. state of Colorado. The City of Colorado Springs has a population of 439,886 (according to the 2013 census) and Colorado Springs Metropolitan Statistical Area has a population of 678,319 people making it the second largest city in Colorado behind Denver and the 41st most populous city in the United States. In July 2006, Money magazine ranked Colorado Springs the best place to live in the big city category, which includes cities with 300,000 or more people. The capital of Colorado, Denver, is 68 miles to the north. At an elevation of 6,035 feet, Colorado Springs is over a mile above sea level, though some areas of the city are significantly higher. The city itself is situated near the base of one of the most famous American peaks, Pikes Peak, on the east side of the Rocky Mountains.

*Reprinted from http://en.wikipedia.org/wiki/Colorado_Springs%2C_Colorado

Local Weather

Colorado Springs' pleasant climate is a key element in the area's high quality of life. Weather in the Pikes Peak region is surprisingly mild; uncomfortable extremes are rare. During the summer months the days may be seasonally warm but when the sun sets, the evening and nights are refreshingly cool. Few homes need central air conditioning. Long and lingering Indian Autumns are common, while spring is a mild precursor to summer. Colorado Springs meteorological classification is an alpine desert with about 250 days of sunshine and only 15 to 16 inches of precipitation per year. Humidity remains comfortably low.

Convention & Visitors Bureau

The Colorado Springs Convention and Visitors Bureau offers many services including lodging, dining, activities and attractions, visitor's guides, maps, local weather, and an event calendar. They can be reached toll free at 1 (877) PIKESPEAK or online at www.experiencecoloradosprings.com.

Preventing Altitude Sickness

UCCS sits 6,035 feet above sea level, and Pike's Peak's elevation is 14,110 feet. The concentration of oxygen at sea level is about 21%, and the barometric pressure averages 760 mm Hg. As altitude increases, the concentration stays the same, but the number of oxygen molecules per breath is reduced. At 6,000 feet the barometric pressure is only 609 mm Hg, so there is roughly 60% fewer oxygen molecules per breath (at 14,000 ft the barometric pressure is only 447 mm Hg, about 40% fewer).

In order to properly oxygenate the body, your breathing rate (even while at rest) must increase. The major cause of altitude sickness is going too high too fast. Given time your body can adapt to the decrease in oxygen molecules at a specific altitude. This process is known as acclimatization and generally takes 1-3 days at that altitude.

*Reprinted from <http://www.aboutbreathing.com/articles/altitude-sickness.html>

What to Expect

Difficulty Sleeping
Loss of Appetite
Nausea
Headache
Shortness of Breath
Intense UV
Radiation

What to Do About It

Do Not Use Sleeping Pills
Drink Plenty of Water
Take Aspirin
Get Lots of Rest
Do Not Attempt Intense Exercise
Increase Ventilation in Your Room
Use Plenty of Sun Block, SPF 15 or Higher



ACCOMMODATIONS

The **Village at Alpine Valley Residence Halls**, our brand new residence halls, can accommodate **999** participants. The Residence Halls are organized in suites and include a full bath (no tubs). No more than four people will share a suite.

The **Summit Village Residence Halls** opened in 1997 and can accommodate approximately 900 participants. The Residence Halls are organized in suites and include a full bath (no tubs) and common living area. No more than four people will ever share a suite.

The **Alpine Village Apartments** were opened in 2004 and feature a full kitchen, private bedroom, and two bathrooms to every four people in an apartment. There are approximately 150 apartments available during the summer session.

It should be noted that linens will be placed in the room for conference participants to make their own beds.

The Monarch Front Desk is located in the Summit Village and is where participants will check in and get their lodging and meal keys and recreation center access card.



Check-In/Check-Out Location and Hours of Operation

Village at Alpine Valley & Alpine Village Apartments

La Plata House | M-S 8:00 AM - 9:00 PM

Summit Village

Monarch House | M-S 8:00 AM - 9:00 PM

After Hours Contact
719.255.4600

Additional Amenities

- Mail Drop Location
- Vending Machines (Snack, Beverage, Personal Supplies, Phone Cards)
- Ice Machine - Summit Village only
- Laundry Room – Free washing & drying – Bring your own detergent/softener
- Ethernet port in every room (Don't Forget Your Ethernet Cord)



STANDARDS OF SERVICE

Summit Village - Village at Alpine Valley - Alpine Valley

Standards of Service include, but are not limited to:

- One unlofted & unmade oversized twin bed; desk; chair; wardrobe closet
- One set of linen per week (two sheets, one pillow, one pillow case, & one blanket) sheets & pillowcase may be exchanged weekly.
- One towel, one wash cloth, for every two days (bathmats available upon request)
- One room key per person
- One access/meal/recreation center card per person (combined with the room key)
- Fan, drinking cup, & soap (alarm clock available upon request)
- Ethernet port in every room (Don't Forget Your Ethernet Cord)
- Complimentary Wi-Fi access
- Laundry Room - free use of washers & dryers (bring your own laundry detergent, softener, dryer sheets)

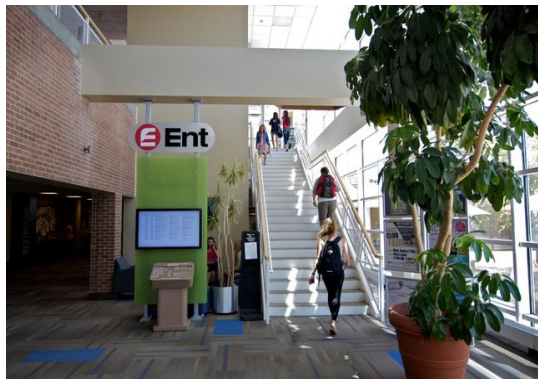
The University is pleased to provide the following optional services to conference guests for a small fee:

Alpine Village Apartments

- Cooking supplies (\$10.00 per week) only available in Alpine Village Apartments
- Television (\$7.00 per week) only available in Alpine Village Apartments

Extra charges will also be assessed for the following:

- Damage to university property, furnishings and/or equipment at the cost of replacement value - i.e. screen removal: \$75.00 in addition to damage cost, tampering with fire safety equipment: \$500 in addition to equipment damage cost
- Lost Door Access/Meal Service Card Replacement: \$10.00
- Lost Keys: \$60.00/key



FACILITIES

The Summer Conferencing Office has a variety of meeting space available. The conference rooms can accommodate 5-1500 people. Whatever the occasion, whatever the event, nobody brings more to the show than UCCS. Flexible meeting spaces? Quiet, comfortable lodging? On-campus catering? State of the art presentation technology? We offer them all, along with second-to-none service from a first-class management staff.

The Summer Conferencing Office is located in the University Center and is where you can find the Scheduling Office and Conference Coordinator.

University Center Amenities

Bookstore

STORE HOURS: M-F 8:00 AM – 5:00 PM

PHONE: 719.255.3247 | EMAIL: books@uccs.edu | LOCATION: First floor, University Center

Copy Center

STORE HOURS: M-F 8:00 AM – 5:00 PM

PHONE: 719.255.3213 | EMAIL: copycenter@uccs.edu | LOCATION: First floor, University Center

Ent Federal Credit Union branch & ATM (No Surcharge)

SUMMER STORE HOURS: M-F 9:00 AM – 4:00 PM (May 18-August 7)

PHONE: 719.574-1100 | LOCATION: First floor, University Center

Vending Machines: Snacks & Beverages.

Receive and Store Advance Conference Supplies/Materials

Recreation Center

Facility Hours: M-F 6:00 AM – 8:00 PM

Saturday 10:00 AM – 6:00 PM | Sunday 12:00 PM – 6:00 PM

Pool Hours: M, W, F 6:00 AM – 8:00 AM

M-F 11:00 AM - 1:30 PM

Sat - Sun 1:00 PM - 5:00 PM



FOOD SERVICE HOURS OF OPERATION

Roaring Fork Dining Hall

We are proud to offer our own self-operated food service as the campus dining and food service. All Summer Conference attendees will dine for breakfast, lunch, and dinner at Roaring Fork Dining Hall at Village at Alpine Valley. Roaring Fork Dining Hall offers an All-You-Can-Eat type of dining including: a grill, salad bar, special entrée bar, sandwich bar, pizza bar, and snack/dessert bar.

The number of conference attendees requiring meal service must be given to Conference Services two weeks prior to the start of the conference, to finalize counts, this number will be considered a guarantee (the conference organization will be charged for the guaranteed number or for the actual number of attendees, whichever is greater). Meal cards will be issued for the exact meals required. All meals remaining at the end of the conference will be forfeited.

It may be necessary to stagger meal times for groups eating, when there are several groups on campus. This is necessary to prevent the facilities from being overcrowded. Upon request, Conference Services will adjust meal times for groups, on a case-by-case basis. Some meal times may need to be extended at the request of the conference sponsor, and those requests need to be coordinated through Conference Services.

Daily Meal Times (Monday-Sunday, when groups are in housing, June 1 - August 3):

Breakfast: 7:00 AM – 9:00 AM

Lunch: 11:00 AM – 1:00 PM

Dinner: 5:00 PM – 7:00 PM

**Early and Late meal times can be coordinated in advance*

Clyde's Pub (located in the University Center)

Pub-style dining experience featuring local brews and delicious food

Monday – Friday - 11:00 AM - 4:00 PM, closed on weekends

Cafe 65

Breakfast Monday - Friday: 8:00am - 9:30am | **Regular Hours** Monday - Thursday: 10:30am - 5:00pm
Friday: 10:30am - 2:00pm

Sanatorium Grounds (University Center)

Monday – Friday: 7:30 AM – 3:00 PM

Sanatorium Grounds (Columbine Hall)

Monday - Saturday: 7:30am - 1:00pm

Catering for Special Events

Catering is available for events that require food service that are not included in your conference package. We offer breaks, beverage service, buffet service, banquet and reception services. To view the Catering guidelines and menu, please visit: <http://www.uccs.edu/diningservices/catering.html>. Please contact confserv@uccs.edu to discuss options.